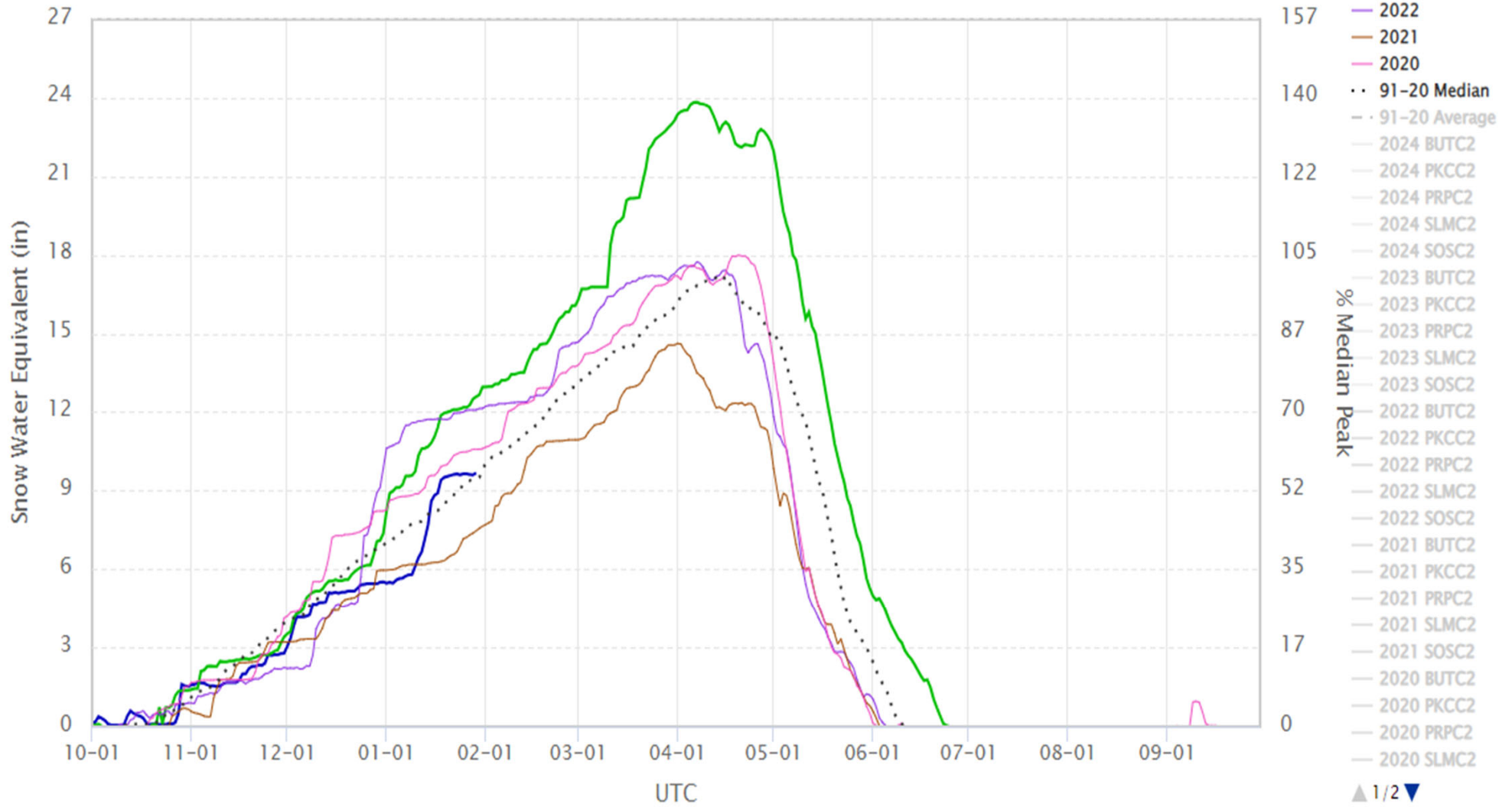


# BlueMesa - Group SNOTEL Plot

BUTC2,PKCC2,PRPC2,SLMC2,SOSC2

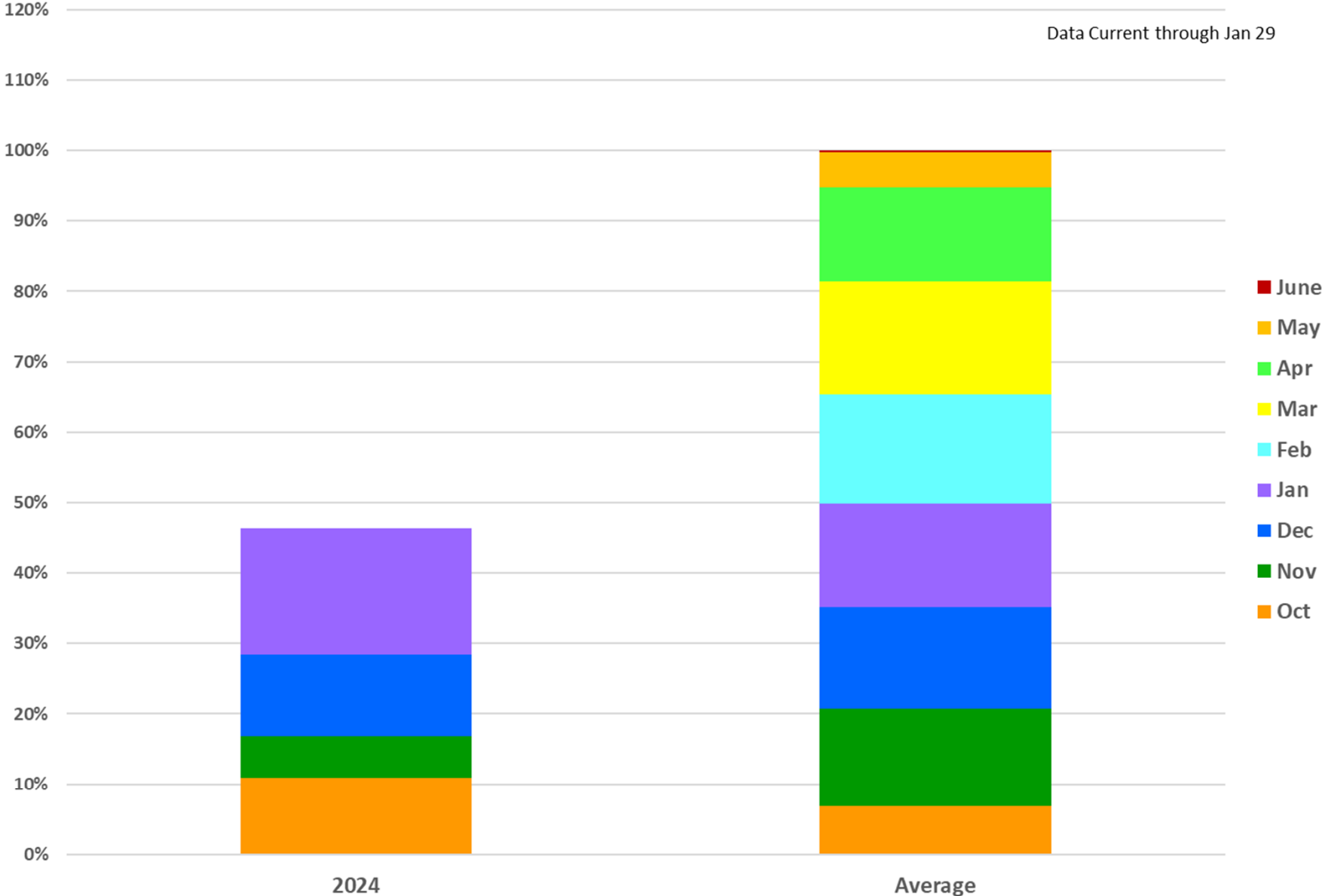
Ob (01-29): 9.68 in, 102% Med - Rate (in/dy): 0.02 (3-day), 0.01 (week)

Peak (01-29): 9.68 in (56.00 % Med Pk) - Med Peak (04-16): 17.19 in



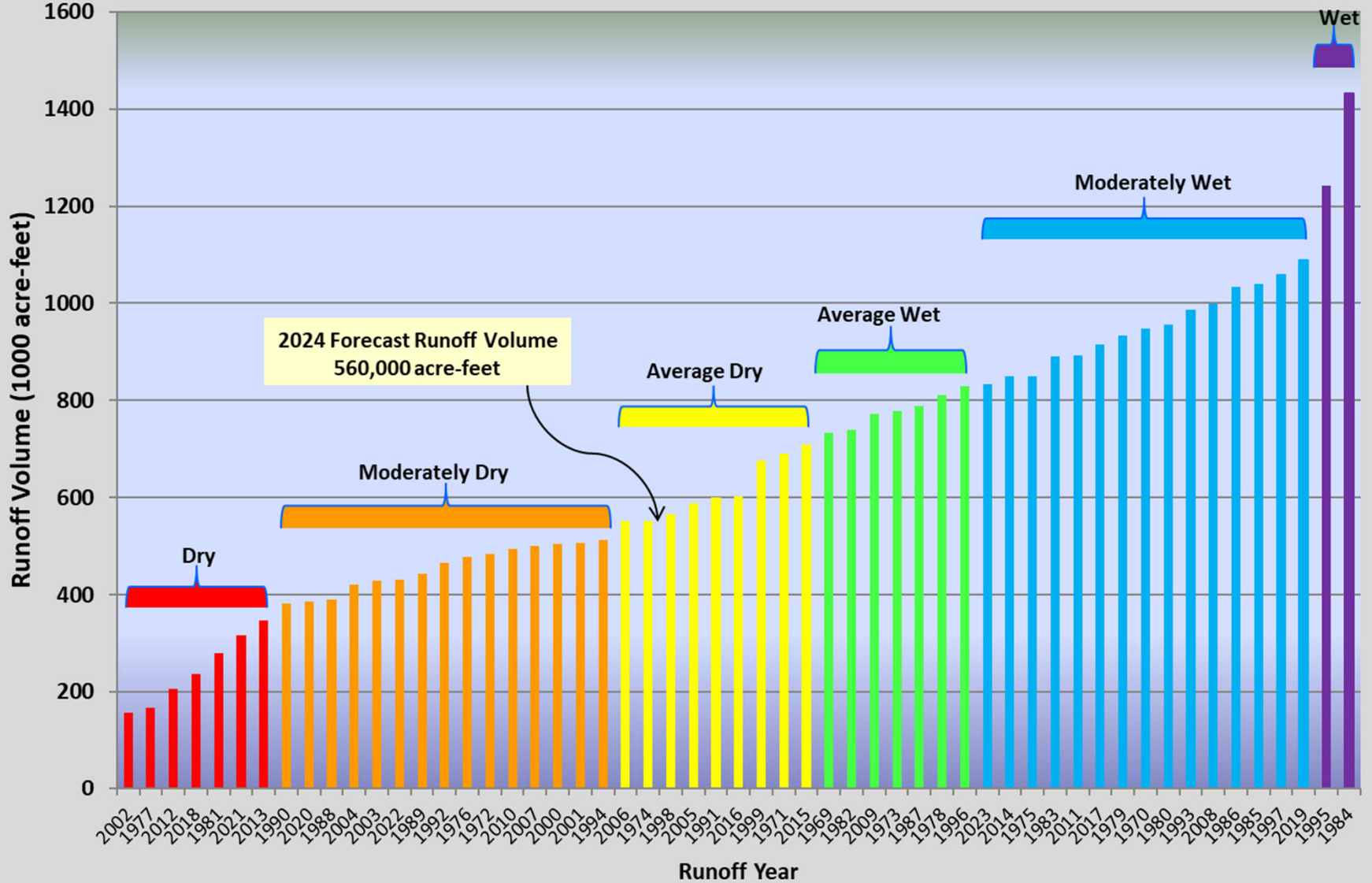
# Upper Gunnison Basin Snow Accumulation

Data Current through Jan 29



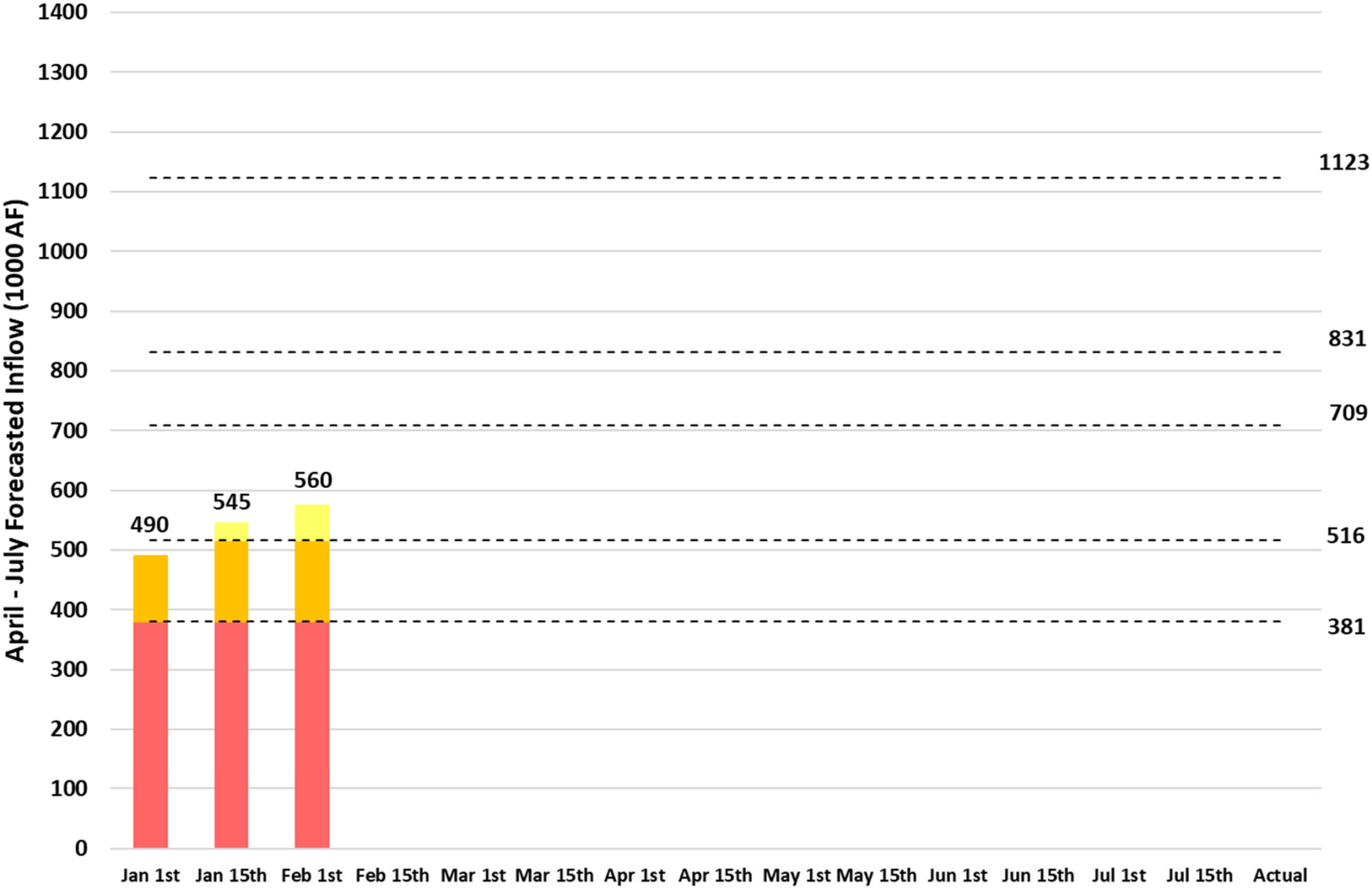
# Blue Mesa Reservoir

## Historic Apr-July Unregulated Inflow Volume Ranking (1969-2023)



# Aspinall Unit

## Forecasted Unregulated Inflow



# Spring Peak & Duration Targets Based on Hydrologic Year Type

| Year Type | Blue Mesa Forecasted<br>April-July Inflow<br>Af | Desired Peak at<br>Whitewater<br>cfs | Duration of Half Bank<br>(8,070 cfs)<br>Days | Duration of Peak Flow<br>(up to 14,350 cfs)<br>Days |
|-----------|---|--------------------------------------|--|---|
| DRY       | < 381,000                                       | 900                                  | 0  | 0   |
| MOD DRY   | 381,000 to 516,000                              | 2,600 to 8,070                       | 0  | 0   |
| AVG DRY   | 516,001 to 709,000                              | 8,070                                | 10   | 0   |
| AVG WET   | 709,001 to 831,000                              | 8,070 to 14,350                      | 20   | 2   |
| MOD WET   | 831,001 to 1,123,000                            | 14,350                               | 40   | 10  |
| WET       | >1,123,000                                      | 14,350                               | 60   | 15  |

**FEB 1  
560,000**



# Baseflow Targets

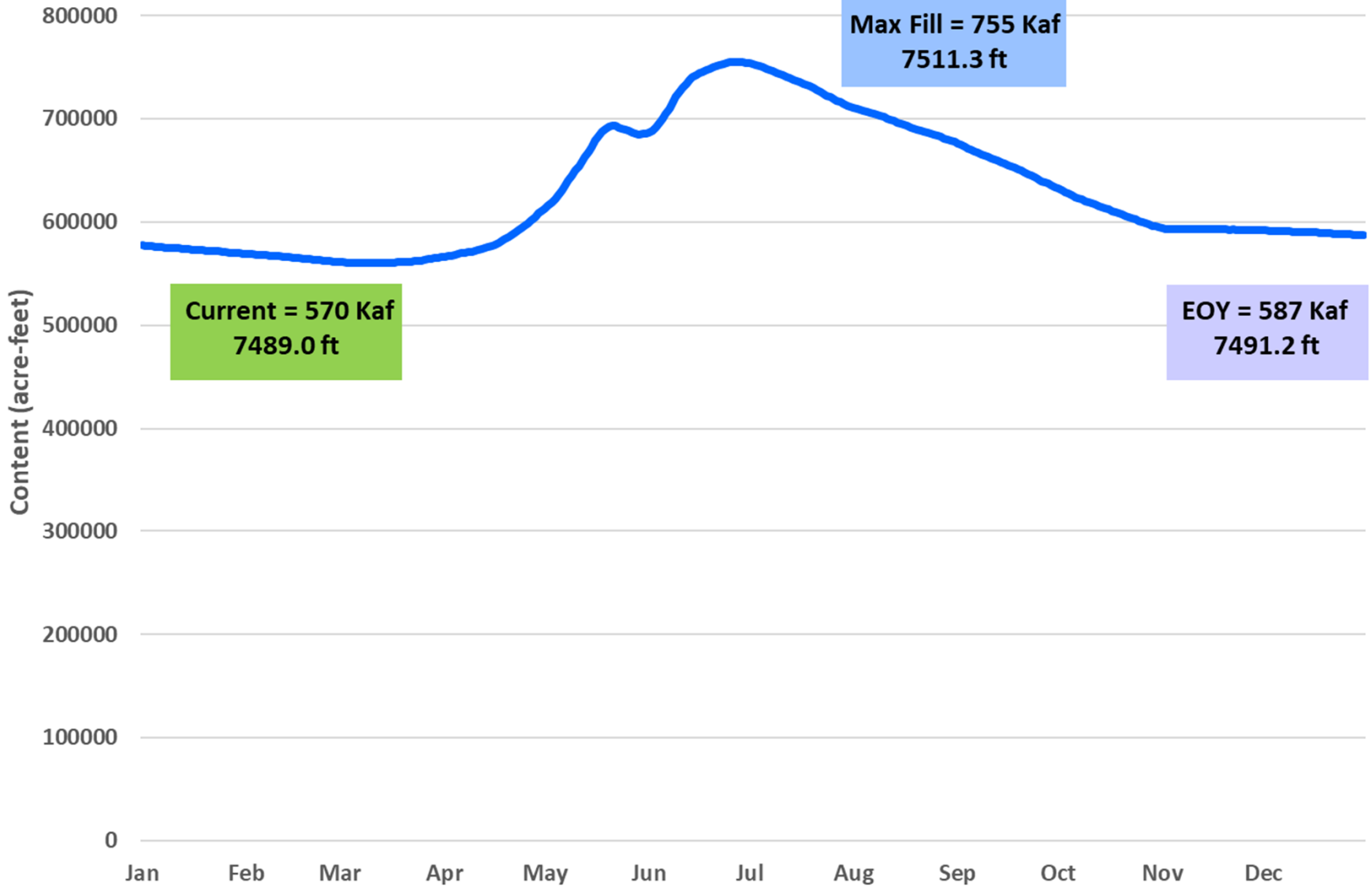
|                 | Jan         | Feb         | Mar            | Apr            | May            | Jun         | Jul         | Aug            | Sep            | Oct            | Nov            | Dec         |
|-----------------|-------------|-------------|----------------|----------------|----------------|-------------|-------------|----------------|----------------|----------------|----------------|-------------|
| <b>Wet</b>      | <b>1050</b> | <b>1050</b> | <b>1050</b>    | <b>1050</b>    | <b>1050</b>    | <b>1500</b> | <b>1500</b> | <b>1500</b>    | <b>1050</b>    | <b>1050</b>    | <b>1050</b>    | <b>1050</b> |
| <b>Mod Wet</b>  | <b>1050</b> | <b>1050</b> | <b>1050</b>    | <b>1050</b>    | <b>1050</b>    | <b>1500</b> | <b>1500</b> | <b>1500</b>    | <b>1050</b>    | <b>1050</b>    | <b>1050</b>    | <b>1050</b> |
| <b>Avg Wet</b>  | <b>1050</b> | <b>1050</b> | <b>1050</b>    | <b>1050</b>    | <b>1050</b>    | <b>1500</b> | <b>1500</b> | <b>1050</b>    | <b>1050</b>    | <b>1050</b>    | <b>1050</b>    | <b>1050</b> |
| <b>Avg Dry</b>  | <b>1050</b> | <b>1050</b> | <b>1050</b>    | <b>1050</b>    | <b>1050</b>    | <b>1500</b> | <b>1500</b> | <b>1050</b>    | <b>1050</b>    | <b>1050</b>    | <b>1050</b>    | <b>1050</b> |
| <b>Mod Dry*</b> | <b>750</b>  | <b>750</b>  | <b>750/790</b> | <b>750/890</b> | <b>750/890</b> | <b>1050</b> | <b>1050</b> | <b>1050</b>    | <b>750/890</b> | <b>750/790</b> | <b>750/790</b> | <b>750</b>  |
| <b>Dry*</b>     | <b>750</b>  | <b>750</b>  | <b>750/790</b> | <b>750/890</b> | <b>750/890</b> | <b>1050</b> | <b>1050</b> | <b>750/890</b> | <b>750/890</b> | <b>750/790</b> | <b>750/790</b> | <b>750</b>  |

\*During March through November in Moderately Dry and Dry type years, additional releases will be made as necessary to provide flows above the 750 cfs anticipated to be diverted by the Redlands Water and Power Company, for the fish ladder and fish screen as shown.

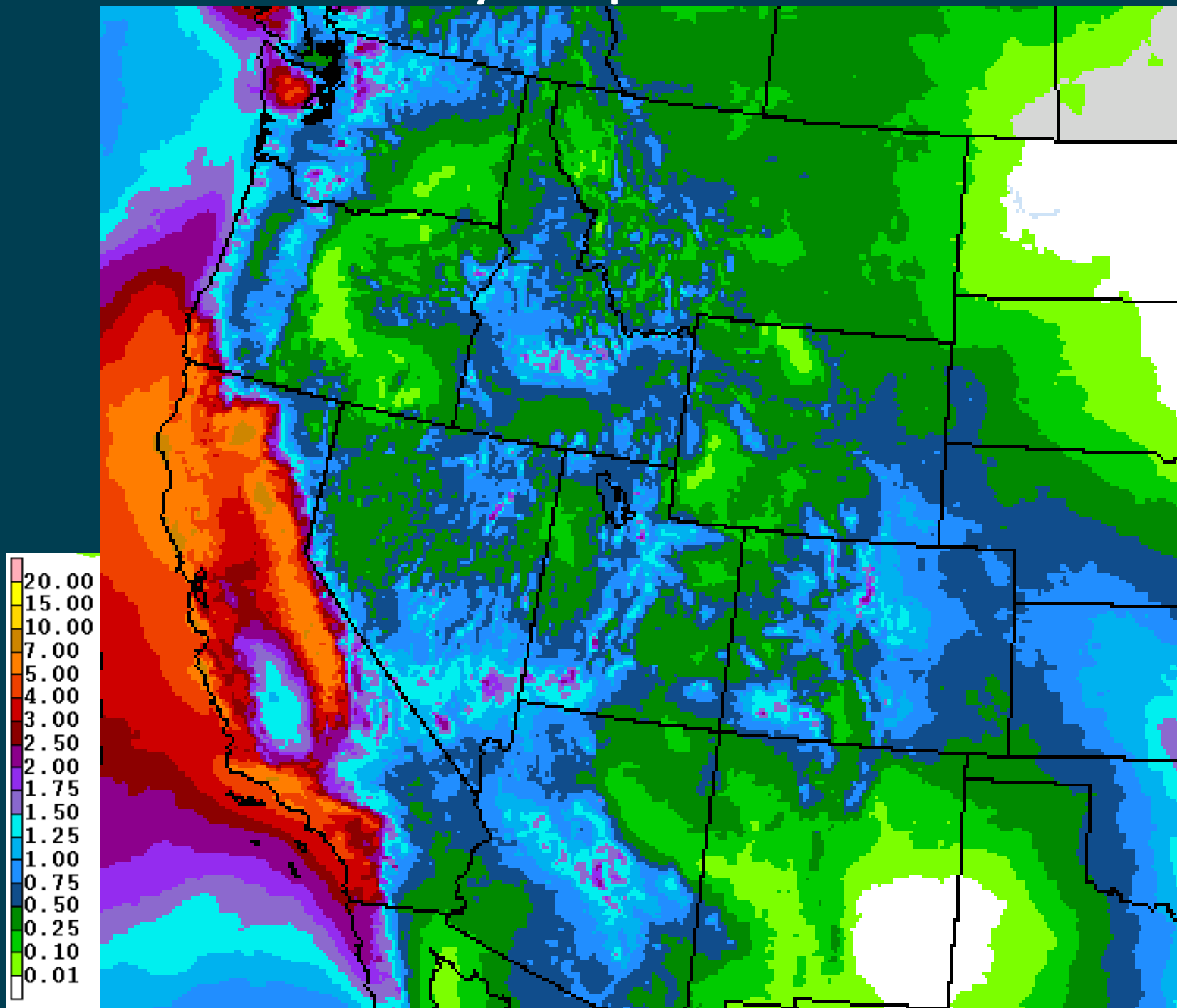


# BLUE MESA RESERVOIR

Full Reservoir  
829,500 AF 7519.4 Ft



# 7 Day Precip Forecast





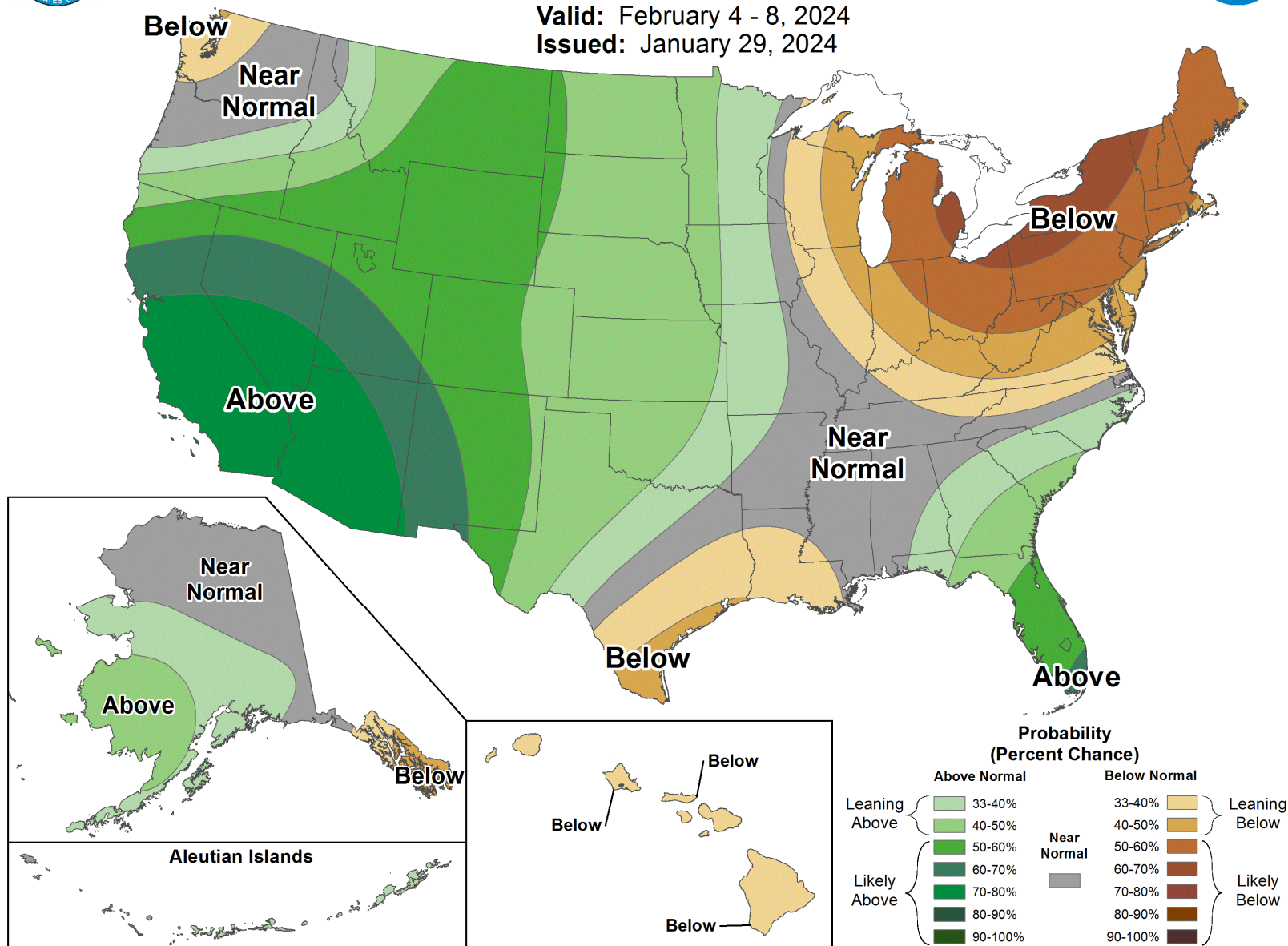


# 6-10 Day Precipitation Outlook



Valid: February 4 - 8, 2024

Issued: January 29, 2024





# 8-14 Day Precipitation Outlook



Valid: February 6 - 12, 2024

Issued: January 29, 2024

